

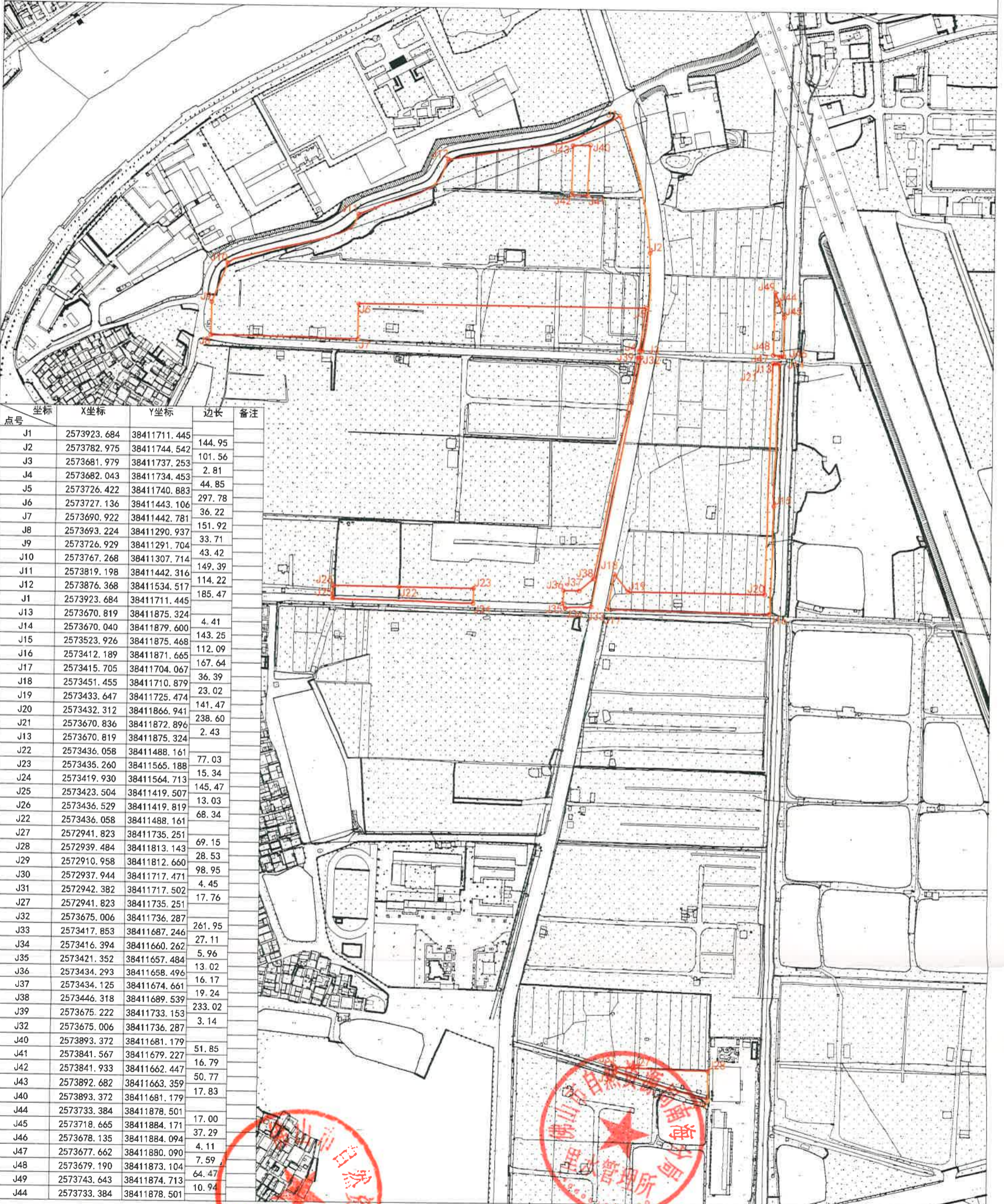
# 用地红线图



地块编号:YDBP44060500802128  
 项目名称:  
 用地面积:67790.79m<sup>2</sup>  
 用地单位:佛山市南海区里水镇人民政府  
 图形UID:{5170A3FD-7A2A-42C6-BB23-7B344B9714C2}  
 土地座落:广东省佛山市南海区里水镇和顺社区



北



点号	X坐标	Y坐标	边长	备注
J1	2573923.684	38411711.445	144.95	
J2	2573782.975	38411744.542	101.56	
J3	2573681.979	38411737.253	2.81	
J4	2573682.043	38411734.453	44.85	
J5	2573726.422	38411740.883	297.78	
J6	2573727.136	38411443.106	36.22	
J7	2573690.922	38411442.781	151.92	
J8	2573693.224	38411290.937	33.71	
J9	2573726.929	38411291.704	43.42	
J10	2573767.268	38411307.714	149.39	
J11	2573819.198	38411442.316	114.22	
J12	2573876.368	38411534.517	185.47	
J1	2573923.684	38411711.445		
J13	2573670.819	38411875.324	4.41	
J14	2573670.040	38411879.600	143.25	
J15	2573523.926	38411875.468	112.09	
J16	2573412.189	38411871.665	167.64	
J17	2573415.705	38411704.067	36.39	
J18	2573451.455	38411710.879	23.02	
J19	2573433.647	38411725.474	141.47	
J20	2573432.312	38411866.941	238.60	
J21	2573670.836	38411872.896	2.43	
J13	2573670.819	38411875.324		
J22	2573436.058	38411488.161	77.03	
J23	2573435.260	38411565.188	15.34	
J24	2573419.930	38411564.713	145.47	
J25	2573423.504	38411419.507	13.03	
J26	2573436.529	38411419.819	68.34	
J22	2573436.058	38411488.161		
J27	2572941.823	38411735.251	69.15	
J28	2572939.484	38411813.143	28.53	
J29	2572910.958	38411812.660	98.95	
J30	2572937.944	38411717.471	4.45	
J31	2572942.382	38411717.502	17.76	
J27	2572941.823	38411735.251		
J32	2573675.006	38411736.287	261.95	
J33	2573417.853	38411687.246	27.11	
J34	2573416.394	38411660.262	5.96	
J35	2573421.352	38411657.484	13.02	
J36	2573434.293	38411658.496	16.17	
J37	2573434.125	38411674.661	19.24	
J38	2573446.318	38411689.539	233.02	
J39	2573675.222	38411733.153	3.14	
J32	2573675.006	38411736.287		
J40	2573893.372	38411681.179	51.85	
J41	2573841.567	38411679.227	16.79	
J42	2573841.933	38411662.447	50.77	
J43	2573892.682	38411663.359	17.83	
J40	2573893.372	38411681.179		
J44	2573733.384	38411878.501	17.00	
J45	2573718.665	38411884.171	37.29	
J46	2573678.135	38411884.094	4.11	
J47	2573677.662	38411880.090	7.59	
J48	2573679.190	38411873.104	64.47	
J49	2573743.643	38411874.713	10.94	
J44	2573733.384	38411878.501		

佛山快好测绘科技有限公司

